



EPIC BLUE

With you all the way



Why did we start Epic Blue?



The ability to know the location of responders and their proximity to hazards in real-time

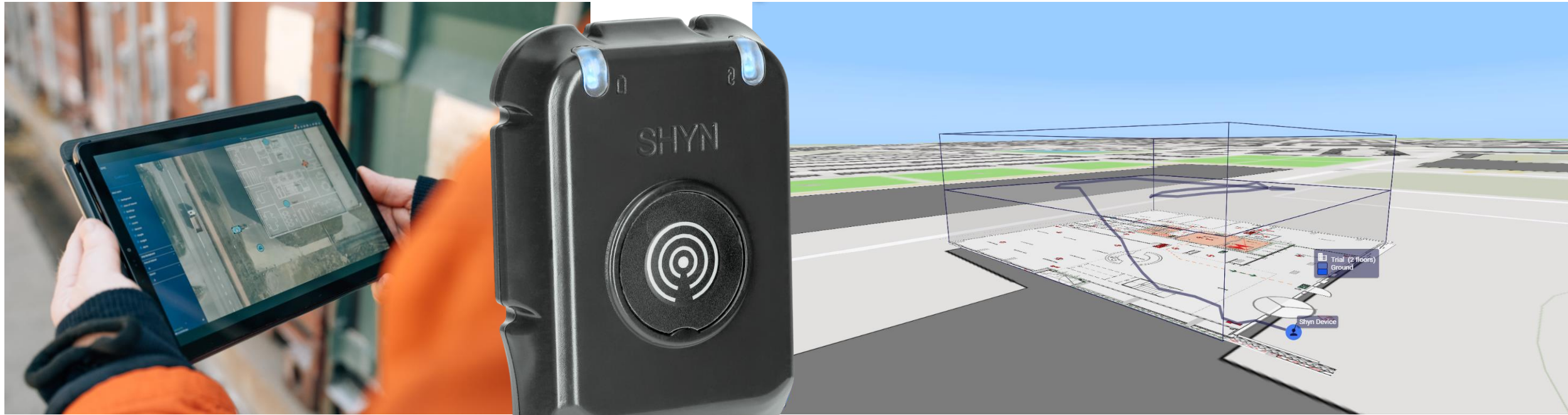
N°1 gap of the Common Global Capability Gaps defined by IFAFRI.



What solution did we come up with?

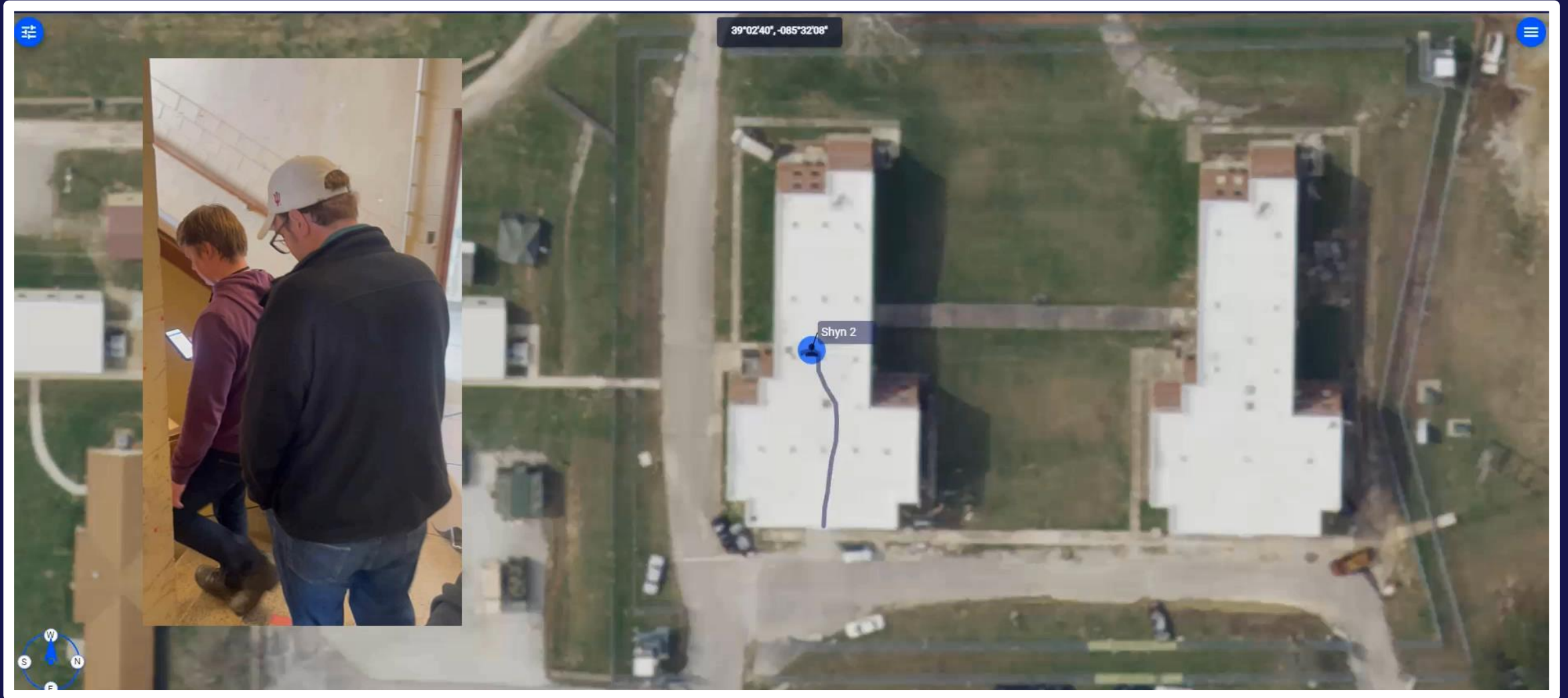
X HYPER LOCATION AI-driven software to reliably know the 3D location people in GPS-denied environments

S SHYN Robust wearable that feeds Hyper Location with high-quality sensor data



2019 - SHYN V1

- Artificial Intelligence
- Real-time signal fusion
- GPS augmentation
- Anti spoofing
- Indoor Maps



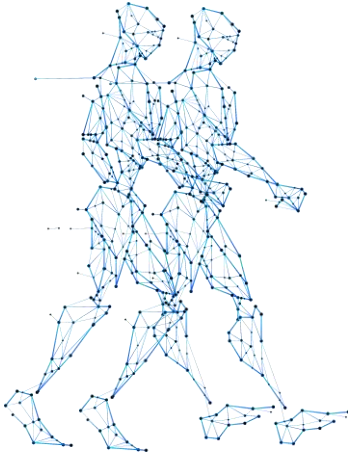
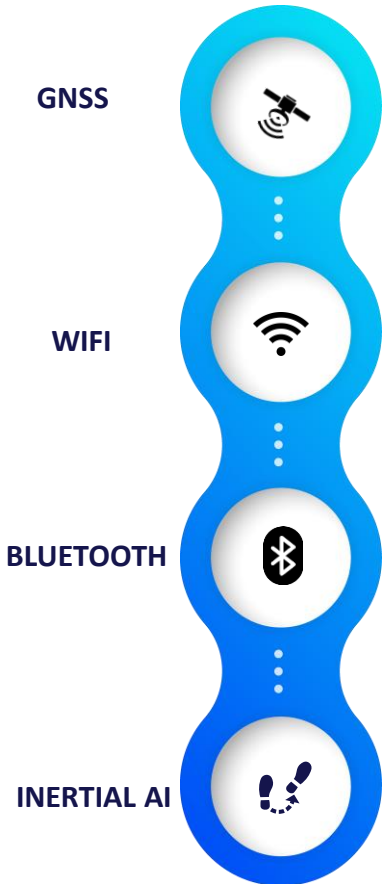
How does it work?



Continuous fusion of positioning data.

+

Our inertial AI ensures localisation if no GNSS, Wi-Fi or Bluetooth signals are available.



Capturing location and movement data...

...which our trained AI engine uses to understand the physical motions of people...

...in order to calculate positions.

What solution did we produce for awareness of health hazards?



Advanced positioning technology for fast emergency response



True Alert system for any type of risk

- Manual: Panic button,
- Automated: Fall detection, Man-down, Danger Zone alerts
- Location-based: Geofences, Missed ETA, Toxic Exposure, Visitor Access

Continuous optimisation to reduce false alert overload



Modular capabilities to increase efficiency and user experience

- First Responders – Construction & Production– Utilities – Visitors – Security – Workplace Violence - Correction facilities

“The most advanced Worker Safety application in the market”

John Meiresone – Fire Chief



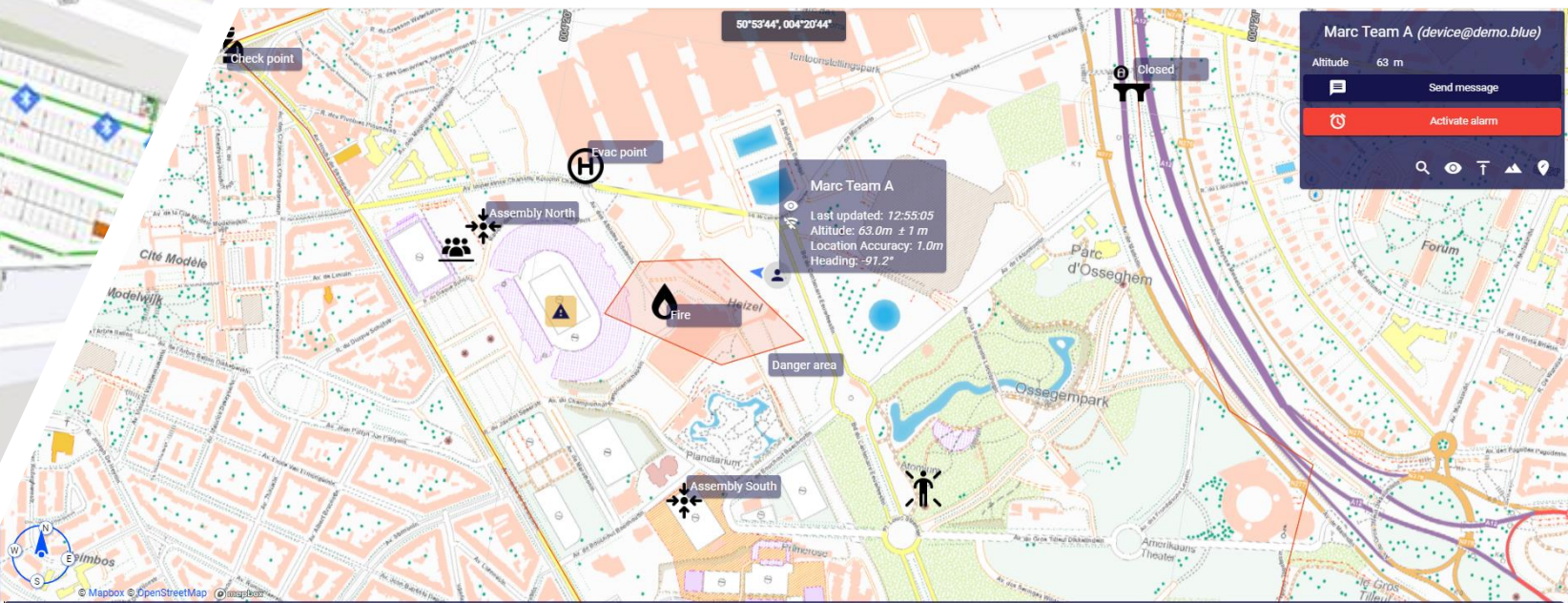
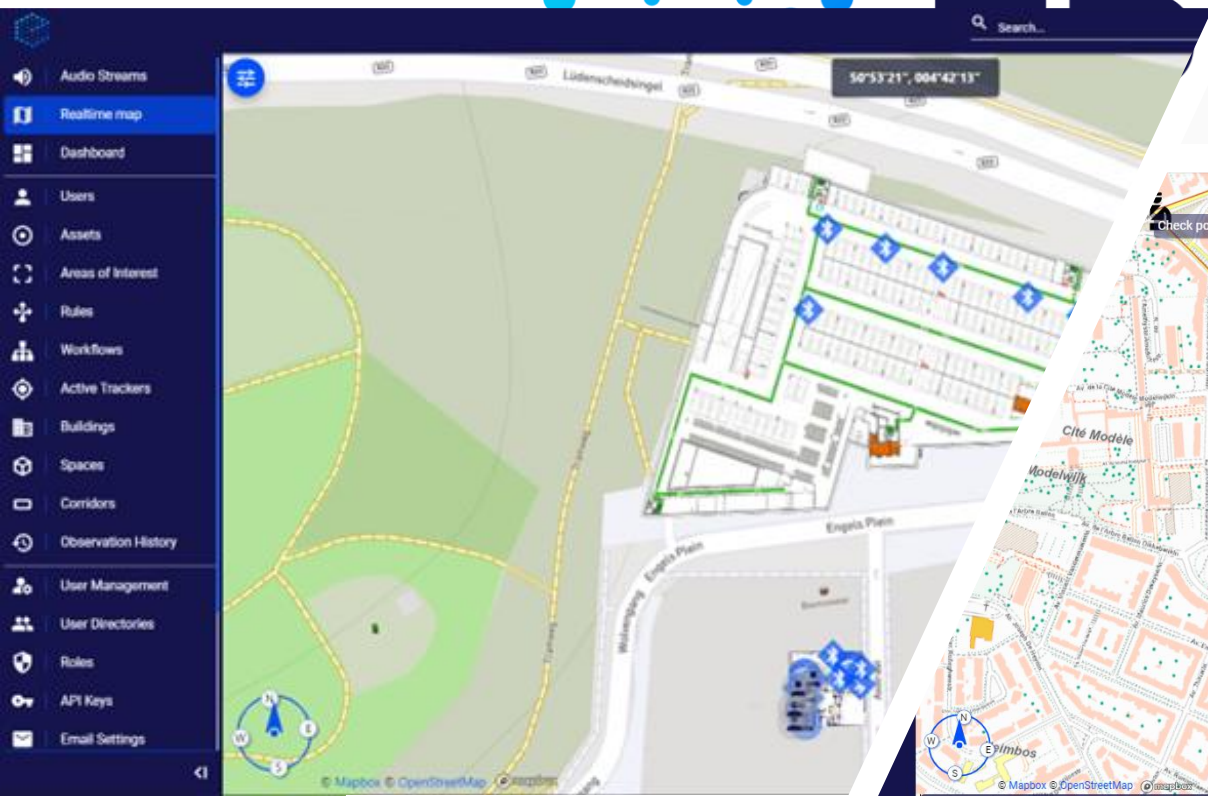
ARTES DEMONSTRATOR
Online Article



GUARDIAN



Incident Management





EPIC BLUE

Michael Ilsbroux

Michael.Ilsbroux@epic.blue